

Space Management Principles

UC Santa Cruz

July 1995

Definition of Terms

Academic Office -

An academic office is defined as a room used by faculty, department chairs, other academic instructional appointees (e.g. lecturers, instructors, specialists), teaching assistants, emeriti, or postdoctoral scholars working at one or more desks, tables, or work stations for their desk-based academic work.

Excluded from this definition are offices for graduate students or other professional and staff researchers and offices for deans, division heads, or directors.

Officer, Unit, and Subunit

These three terms are defined, for purposes of this document only, as follows:

Officer - The Chancellor delegates authority for space to the following campus officers:

Executive Vice Chancellor

Vice Chancellor of Student Affairs

Vice Chancellor of Business and Administrative Services

Assistant Chancellor for Human Resources

Assistant Chancellor for University Advancement

Chancellor's Executive Assistant

Unit - Campus officers may assign space to units which report to them. Units or unit directors include, but are not limited to:

Chancellor/EVC support

Deans of Arts, Humanities, Natural Sciences, Social Sciences, and Graduate Studies

Dean of University Extension and Summer Session

EVC/Associate Academic Vice Chancellor

Public Information Office and Ombudsperson

Registrar (for general assignment classrooms)

Units reporting to the Vice Chancellors and Assistant Chancellors

University Librarian

Subunit - Units may distribute space to subunits which report to the unit's director. Subunits or subunit directors include, but are not limited to:

Academic Senate

Audit

Boards

Chancellor/EVC general administration

College Provosts

Contracts and Grants

Divisional administration

Office of Research

ORUs, ORAs, and FRAs

Planning and Budget

Summer Session

University Extension

SPACE MANAGEMENT PRINCIPLES

Table of Contents

	<u>Page</u>
Definition of Terms	1
Purpose of Principles	1
1. Criteria Establishing the Need for Space	2
2. Guiding Planning Principles	3
3. Responsibility for and Assignment of Space	4
3.1 Responsibility for Space Resources	4
3.2 Assignment and Reassignment of Space	5
3.3 Temporary Reassignment of Space	7
3.4 Assignment of Office Space	7
4. Space Committees	9
5. Space reassignment Process	9

Appendices

Appendix A	Space Assignments and Reassignments
Appendix B	Table 1.0 Space delegated to Officers--For Fall 1994
	Table 1.1 Space Delegated to Executive Vice Chancellor and Assigned to Units--For Fall 1994
	Table 1.1A-1.1H Space Assigned from Executive Vice Chancellor to Units and Distributed to Subunits--For Fall 1994
	Table 1.2 Space Delegated to Vice Chancellor--Student Affairs and Assigned to Units--For Fall 1994
	Table 1.3 Space Delegated to Vice Chancellor--Business and Administrative Services and Assigned to Units--For Fall 1994
	Table 1.2 Space Delegated to Vice Chancellor--Human Resources and Assigned to Units--For Fall 1994
	Table 1.2 Space Delegated to Vice Chancellor--University Advancement and Assigned to Units--For Fall 1994
	Table 1.2 Space Delegated to Chancellor's Executive Assistant and Assigned to Unit--For Fall 1994
Appendix C	Example 1 Reassignment of Space from One Officer to Another Officer
	Example 2 Reassignment of Space from One Unit to Another Unit (Reporting to the Same Officer)
	Example 3 Reassignment of Space Within One Unit
Appendix D	Organization of Space Committees
Appendix E	Space Reassignment Flow Chart

SPACE MANAGEMENT PRINCIPLES

UC Santa Cruz

Introduction

These *Space Management Principles for UC Santa Cruz* were recommended by the Space Policy Committee and approved by the Chancellor. These principles were established to provide a comprehensive framework for assignment of space in order to facilitate more effective management of space resources.

The campus must manage its space resources with the utmost care. This is particularly true now, as the campus does not currently have sufficient space (both in terms of quantity and programmatic suitability) to meet the needs of all its academic programs and student and administrative services. For example, for fall 1994 the campus' space for instruction and research programs (about 24% of total campus space) totals only about 85% of the space generated by enrollment workload factors according to California Postsecondary Education Commission (CPEC) guidelines (see Section 1.1.1 and 1.1.2 for more information on CPEC space guidelines). Once the campus begins to grow again, this percentage will drop even lower before new buildings not already funded for construction can be built.

As a result, current space assignments may need to change, and when new buildings are completed, the disposition of space in the new buildings and the released space in existing buildings may change from what was originally planned.

Included in this paper are general criteria for establishing the need for space (Section 1) and guiding planning principles (Section 2), both of which should always be considered when planning space or when assigning or reassigning space. Also included is information on who is responsible for space and how space is assigned and reassigned (Sections 3.1 through 3.3). Because academic offices are particularly in short supply, the next section (3.4) addresses the assignment of academic offices. The last two sections include a description of the four campus space committees (Section 4) and information on the space reassignment process (Section 5).

Purpose of Principles

The purpose of these principles is to establish a comprehensive framework for assignment and management of space in order that campus space be used efficiently and effectively to meet the campus' academic mission.

Within the planning process, space is considered as much a campus resource as faculty, staff, or support dollars. Accordingly, campus space resources should be used in the best possible manner, keeping in mind that the campus, in approving a campus program, pledges itself to commit resources to sustaining that campus program.

1. Criteria for Establishing the Need for Space

1.1 Traditional quantitative and technical considerations are used to determine space needs.

Instruction and Research Space Criteria

1.1.1 Workload factors for instruction and research space are based on the FTE needing space for each activity. These factors include student course enrollments, weekly student contact hours in facilities, and numbers of faculty, graduate students, post-docs, teaching assistants, staff, and other personnel.

1.1.2 The California Postsecondary Education Commissions (CPEC) space standards are used to calculate a broad envelope of space need for instruction and research activities. CPEC standards are intended to be used as overall planning and budgeting tools. They should not be applied to individual programs without a thorough review of the program and necessary adjustments to the standards. Roughly, CPEC standards quantitatively calculate:

(Workload Factors) x (CPEC Standards) = Activity Space Need

Campus practice has been to balance instruction and research space between the divisions when adding new buildings and considering the disposition of associated release space.

Library Space Criteria

1.1.3 Library space needs are based on numbers of users, collection size, and library staffing.

Administrative Space Criteria

1.1.4 Office adequacy analysis establishes the numbers of offices and the amount of office space required to house people in all administrative activities across the campus. (When adding new personnel or new programs, associated space needs must be identified by the unit requesting the addition.)

1.2 Individual program considerations will modify the quantitative techniques for determining space need.

All Space Criteria

1.2.1 The location, functional layout, and attributes of certain space (especially interim space arrangements) may have a detrimental effect on programs even though the space is quantitatively adequate.

1.2.2 The establishment of new programs may require allocation of space. Existing programs may be disbanded, combined, or reorganized and thus require the reallocation of space.

1.2.3 Codes governing safety, seismic design, handicap accessibility, energy conservation, environmental concerns, etc. can modify space allocation requirements.

Instruction and Research Space Criteria

1.2.4 Changing instructional methodology and changing curriculum may increase or decrease standards for classrooms and teaching labs.

1.2.5 The level and nature of research activity and the different and changing state-of-the-art for instrumentation required to support research may call for more or less space than specified in the standards.

1.2.6 Unique programs may need special space considerations. For example, the use of some biological and radiological materials results in specific facility requirements.

2. Guiding Planning Principles

The following general space management principles apply to all campus units (e.g., academic units, administrative units, housing, and student services):

The campus values flexibility and responds to the need for change.

Campus space can be reassigned.

The campus has processes implemented to analyze and determine appropriate space assignments and to plan for future space projects (e.g., projected future enrollments and room utilization).

When managing space resources, the following planning principles should be considered (the first three principles listed are mainly applicable to campus academic space planning):

- 2.1 When possible, if units desire to consolidate their space assignments for reasons of academic interaction and administrative efficiency, contiguous spaces should be provided.
- 2.2 Clustering of cross-disciplinary groups with common research or teaching interests should be facilitated. Interdisciplinary activity is much valued and space throughout the campus should be provided that nurtures such intellectual propinquity.
- 2.3 Where possible, space should be provided for innovative undergraduate teaching programs being developed by the colleges.
- 2.4 The original purpose and funding of a building and any formal process resulting in a change to the original purpose (e.g., renovations funded from a different source) that has occurred over the years should be a consideration.

3. Responsibility for and Assignment of Space

3.1 Responsibility for Space Resources

Space is owned by the University. The Chancellor has overall responsibility for the equitable and optimum use of space resources, with the final authority over all space allocations and assignments. The Chancellor delegates authority to the following campus officers (representing all campus units, including academic units, administrative units, housing, and student services):

- The Executive Vice Chancellor is responsible for space to support all instruction and research, organized research, academic support, and academic administration.
- The Vice Chancellor of Student Affairs is responsible for space to support housing and student life services and student administrative services.
- The Vice Chancellor of Business and Administrative Services is responsible for space to support institutional services.
- The Assistant Chancellor for Human Resources is responsible for space to support human resources, affirmative action, and Title IX.
- The Assistant Chancellor for University Advancement is responsible for space to support development and alumni services.
- The Chancellor's Executive Assistant is responsible for space to support the Public Information Office, the Ombudsman, and Governmental Relations Office.

Due to the shortage of space, campus space should not be assigned to non-campus organizations for other than fee-based temporary or occasional use.

Appendix A is a chart of *Space Assignments and Reassignments* responsibilities.

Appendix B includes tables showing space assignments in each campus building. The first table lists space by building and indicates the campus officers listed above to whom space in each building is currently assigned (fall 1994). Additional tables provide further breakdowns of the space assignments. These tables will be updated annually based on the official fall facilities inventory.

3.2 Assignment and Reassignment of Space

Assignment of Space

Campus officers¹ may allocate space under their jurisdiction to units reporting to them, and units may allocate space to subunits (see Definition of Terms for definition of officers, units, and subunits). For example, the Executive Vice Chancellor allocates space to the four deans of the divisions, and they, in turn, allocate space to the boards of studies.

Reassignment of Space

Using the guiding planning principles listed in Section 2 above, the campus space planning philosophy assumes a flexible allocation of space, with the capability to increase or decrease the resources available to any campus unit (including academic units, administrative units, housing, or student services) as needs change. Recognizing that needs change, the Chancellor may reassign space. An officer, a unit, a subunit, or an individual may also initiate a reassignment of space. See **Appendix C** for three examples of space reassignments, summarized as follows:

Example 1 - Reassignment of space from one officer to another officer:

- requires Space Policy Committee or Working Subcommittee review and recommendation to the Chancellor, and
- requires Chancellor's approval².

An example would be Business and Administration Services space reassigned to the Executive Vice Chancellor.

Example 2 - Reassignment of space from one unit to another unit (reporting to the same officer):

- does not require Space Policy Committee or Working Subcommittee review (unless disputed or recommendation of Space Policy Committee or Working Subcommittee is requested), and
- requires Chancellor's approval³.

An example would be space from one division reassigned to another division.

Example 3 - Reassignment of space within one unit:

- does not require Space Policy Committee or Working Subcommittee review,
- does not require Chancellor's approval, and
- reassignment reported to Capital Planning and Space Management through annual FDX update process.

An example would be space from one board reassigned to another board within the same division.

Records of all reassignments will be kept by Capital Planning and Space Management.

¹ Currently, the campus officers are: Executive Vice Chancellor, Vice Chancellor of Student Affairs, Vice Chancellor of Business and Administration Services, Assistant Chancellor for Human Resources, Assistant Chancellor for University Advancement, and Chancellor's Executive Assistant.

² An approval letter from the Chancellor will be sent to affected parties.

³ Forms for requesting the Chancellor's approval are available from Capital Planning and Space Management. An approval letter from the Chancellor will be sent to affected parties.

When space is planned for reassignment in a college (e.g., one division or board to another division or board), the college provost should be kept informed.

For more information on the campus space committees, see Section 4 below and **Appendix D. Appendix E** *Space Reassignment Flow Chart* graphically illustrates the **process for space reassignments**.

Reassignment of Released Space

When a new building is planned, space in existing buildings will generally be released for other programs. The Campus Space Plan (shown in *Changes in Assignable Area By Year* tables) includes the disposition of this space. As part of the justification for additional campus space, plans for the disposition of released space is identified in somewhat broad terms and included in documents (e.g., a Project Planning Guide) which are submitted to the Office of the President and to the State.

However, during the approximately five to seven years it takes to plan and complete a new building and release space in existing buildings, the programmatic needs and space requirements of the campus can change. Continual review must occur and detailed plans for disposition of individual rooms should be done closer to the time the space will be released.

3.3 Temporary Reassignment of Space

Space can be transferred temporarily without review by the Space Policy Committee or Working Subcommittee or the Chancellor's approval. The terms of the agreement of the transfer, including the purpose, the time period, and any funds that will be spent on alterations, shall be in writing and submitted to Capital Planning and Space Management (which functions as the "title office" for such campus agreements⁴).

If a temporary reassignment is in dispute and a resolution cannot be reached, it should be submitted to the appropriate Space Committee, which will make a recommendation to the Chancellor.

Official space inventory reports show space assigned to the current primary user. Secondary records will be kept by Capital Planning and Space Management for the temporary reassignment of space and the terms of the reassignment agreement.

3.4 Assignment of Office Space

Campus office space is reviewed periodically through office adequacy analyses prepared by Capital Planning and Space Management and distributed to Space Policy Committee and Working Subcommittee members. Academic offices comprise approximately 7% of campus space, excluding residential spaces, and approximately 30% of all campus office space.

3.4.1 Assignment of Academic Offices⁵

There will always be insufficient academic offices to meet the needs of the divisions' instruction and research programs and the colleges' core courses and special programs⁶.

⁴ Forms for temporary assignments are available from Capital Planning and Space Management.

⁵ See Definition of Terms for description of academic office.

⁶ State CPEC (California Postsecondary Education Commission) standards specify workload factors that generate a need for space. For academic offices they are:

- one academic office for each budgeted faculty FTE;

Thus, this section will provide additional principles on the assignment of academic offices.

- 3.4.1.1 Individuals should not be assigned more than one academic office.
- 3.4.1.2 Although academic (instruction and research) space is assigned to divisions, academic office space should be provided to the colleges to support their core and college-sponsored courses.

Divisional deans and college provosts should meet to discuss academic program plans and needs on a regular basis (a minimum of once a year). Included in this discussion should be any future college programs, core courses, divisional academic plans (including any need for consolidation in a discipline and future faculty and graduate student growth), and associated space needs. A summary or "memo of understanding" should be written and signed by all parties involved after these discussions in order to provide continuity for new provosts and deans. A copy should be provided to Capital Planning and Space Management.

A formula to determine the allocation for each college will be based on a percentage of college instructional load to the total campus instructional load and applied to the number of offices available overall. As core courses are taught in most colleges only during fall quarter, reciprocal agreements for the three quarters may be made between the colleges and divisions.

- 3.4.1.3 Academic offices are allocated by a unit director according to the needs of the unit. In many circumstances, the following guidelines for priorities are used to assign academic offices:
 - 1) Ladder-rank faculty
 - 2) Full-time teaching faculty (including security-of-employment lecturers and recalled VERIP faculty and emeriti)
 - 3) Temporary quarter assignments of teaching visitors (e.g. teaching fellows, associates, or lecturers)
 - 4) Post-docs
 - 5) Teaching Assistants
 - 6) Visiting scholars (if visiting scholars bring funding to the campus, they receive a higher priority)

4. Space Committees

The main committee that deals with campus space is the Space Policy Committee, with two committees reporting to it: the Space Policy Working Subcommittee and Classroom Subcommittee.

-
- one academic office for each postdoctoral headcount; and
 - one academic office for each budgeted teaching assistant FTE.

The State funds construction of academic offices only up to the number of offices allowed under CPEC standards. In addition, the campus generally does not have sufficient offices available to meet the full 100% of standards. (Academic staff exceeds actual offices, primarily due to a lack of capital funding for construction.) Also, the CPEC standards allow office space only for budgeted faculty FTE, not FTE nor actual headcount. This creates an even greater shortage of offices. For Fall 1994, there were 640 academic offices, while CPEC guidelines generate a need for 801 academic offices. Budgeted faculty FTE was 499, while actual faculty FTE was 543, and actual faculty headcount was 690.

4.1 Space Policy Committee

Advises and makes recommendations to the Chancellor on matters of capital planning and space issues, including overall space policy, principles, goals, space plans, and capital improvement programs.

4.2 Space Policy Working Subcommittee

Reports to the Space Policy Committee and both iron out operational problems, including space reassignments and disputes, and distills major policy questions on matters of capital planning and space management.

4.2.1 Space Evaluation Team

Reports to the Space Policy Working Subcommittee. Evaluates and makes recommendations on space assignment disputes, and on space that may not be fully or properly utilized. The team has a panel of members convened on an on-call basis. A team member will be excluded when there is a conflict of interest.

4.3 Classroom Subcommittee

Reports to the Space Policy Working Subcommittee on classroom utilization, design, and other classroom space issues.

Appendix D is a diagram of the functions and reporting relationships of these committees.

5. Space Reassignment Process

A *Space Reassignment Flow Chart* (**Appendix E**) is attached to illustrate graphically the process for requesting space reassignments.

Space Assignments and Reassignments

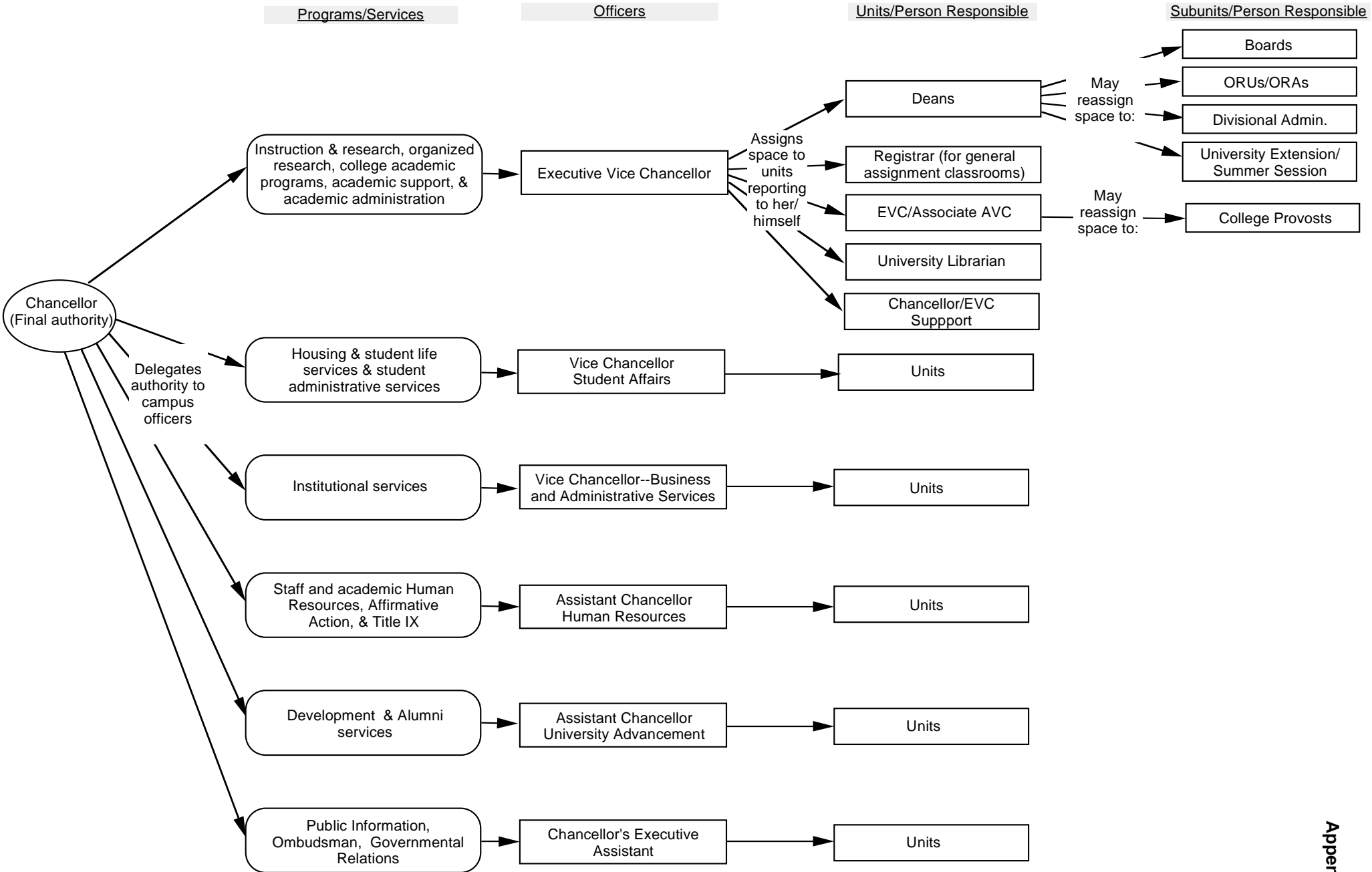


Table 1

Space Delegated to Officers
 For Fall 1994 (As of 3rd week of the quarter)
 In Assignable Square Feet (Asf)

Building Name	Building Total Asf	Campus Officers (See corresponding tables for details)					
		(1.1) Executive Vice Chanc	(1.2) Vice Chanc Student Affairs	(1.3) Vice Chanc Bus & Adm Services	(1.4) Asst Chanc Human Resources	(1.5) Asst Chanc University Advance	(1.6) Chancellor's Executive Assistant
1 Architect & Engineer Trailer	426			426			
2 Affirmative Action Trailer	398				398		
3 Agroecology Trailers (11)	6,237	6,237					
4 Agroecology Building	1,251	1,251					
5 Ano Nuevo Trailer	299	299					
6 Applied Sciences Building	107,665	95,738		11,927			
7 Applied Sciences Trailers (17)	9,462	9,462					
8 Arboretum Buildings (4)	8,738	8,738					
9 Big Creek Reserve Buildings (3)	636	636					
10 Big Creek Reserve Residential Bldg(3)	2,701	2,701					
11 Blacksmith Shop	1,157	1,157					
12 Bookstore Buildings (2)	7,272		7,272				
13 Campus Facilities Trailers (2)	844			844			
14 Cardiff House	1,778		1,778				
15 Cardiff House Annex	369			369			
16 Carriage House	6,034						4,448
17 Classroom Building	10,003	8,723	1,280				1,586
18 College Eight Academic Building	14,963	14,801	162				
19 College Eight Cate	2,814	2,814					
20 College Eight Dining Hall Bid	4,566	4,566					
21 College Eight Kitchen Bid	10,769	2,860	7,909				
22 College Eight Student Commons	2,176		2,176				
23 College Eight Residential Bldgs (14)	126,692		126,692				
24 Communications Building	24,550	9,255	1,544	9,952	3,799		
25 Cookhouse	2,419	2,419	2,419				
26 Cowell College Academic Bld	5,044	4,895	149				
27 Cowell College Classroom Bld	901	901					
28 Cowell College Commons	27,196	9,275	17,921				
29 Cowell College Faculty Annex	1,787	1,787					
30 Cowell College Faculty Wing	2,630	2,510	120				
31 Cowell College Library Study	2,987	2,987					

Table 1

Space Delegated to Officers
 For Fall 1994 (As of 3rd week of the quarter)
 In Assignable Square Feet (Asf)

Building Name	Building Total Asf	Campus Officers (See corresponding tables for details)					
		(1.1) Executive Vice Chanc	(1.2) Vice Chanc Student Affairs	(1.3) Vice Chanc Bus & Adm Services	(1.4) Asst Chanc Human Resources	(1.5) Asst Chanc University Advance	(1.6) Chancellor's Executive Assistant
32 Cowell College Provost Hsg/Garage	R 3,770		3,770				
33 Cowell Residential Buildings (8)	R 61,851		61,851				
34 Cowell Student Health Center	13,664		13,664				
35 Central Heating Plant	8,657			8,657			
36 Crown College Administration	1,933	1,764	169				
37 Crown College Classroom Building	3,987	3,863	124				
38 Crown College Commons	12,291		12,291				
39 Crown College Faculty Wing	4,547	4,547					
40 Crown College Gatehouse	327	327					
41 Crown College Library Study	4,113	4,113					
42 Crown College Multipurpose Rm	2,873		2,873				
43 Crown College Provost House	3,450		3,450				
44 Crown College Residential Bldgs (23)	R 144,565		144,565				
45 Development Trailer	421					421	
46 Dolphinarium	477	477					
47 Elena Baskin Buildings (11)	21,346	21,048		298			
48 Environmental Assessment Trailer	524			524			
49 Earth and Marine Sciences Bld.	82,888	82,888					
50 East Pool Facility	450		450				
51 Env. Health & Safety Facility	2,858			2,858			
52 Env. Health & Safety Trailers (2)	1,633			1,633			
53 Faculty Housing-Hager-Blds (8)	R 47,398		47,398				
54 Farm Buildings (8)	5,100	5,100					
55 Field House East	21,888		21,888				
56 Field House West	10,009		10,009				
57 Fire House	3,457			3,457			
58 Family Student Child Care Fac./Adm	2,489		2,489				
59 Family Student Child Care Trailer	660		660				
60 Family Student Child Care Storage	55		55				
61 Family Student Residential Blds (43)	R 164,032		164,032				
62 Garage	2,759			2,759			

Table 1

Space Delegated to Officers
 For Fall 1994 (As of 3rd week of the quarter)
 In Assignable Square Feet (Asf)

Building Name	Building Total Asf	Campus Officers (See corresponding tables for details)					
		(1.1) Executive Vice Chanc	(1.2) Vice Chanc Student Affairs	(1.3) Vice Chanc Bus & Adm Services	(1.4) Asst Chanc Human Resources	(1.5) Asst Chanc University Advance	(1.6) Chancellor's Executive Assistant
63 Graduate Housing Buildings (4)	R 23,403		23,403				
64 Granary	2,097		2,097				
65 Granite Canyon Trailers (2)	1,127	1,127					
66 Hager Court Office	1,627		1,627				
67 Hahn Art Facility	2,820	2,820					
68 Hahn Student Services	23,214	2,495	20,719				
69 Hay Barn	4,940			4,940			
70 Housing Storage Buildings (2)	158		158				
71 Housing Administration Bld	4,722		4,722				
72 Humanities Trailer	241	241					
73 Kerr Hall	45,026	45,026					
74 Kiosk Buildings (2)	42			42			
75 Kresge College Academic Building	9,128	8,420	708				
76 Kresge College Assembly Building	7,527	4,634	2,893				
77 Kresge College Classroom Building	4,332	4,332					
78 Kresge College Faculty Addition A	1,536	1,536					
79 Kresge College Faculty Addition B	1,855	1,855					
80 Kresge College Library Study	2,932	2,932					
81 Kresge College Lounge	1,317	132	1,185				
82 Kresge College Mini Gym	1,617		1,617				
83 Kresge College Provost House	3,187		3,187				
84 Kresge College Recreation Building	2,910		284				
85 Kresge College Residential Bld (18)	R 87,113	2,626	87,113				
86 Kresge College Storage Bld	159			159			
87 Kresge/Porter Trailer	1,195	545		650			
88 KZSC Storage/Transmitter (2)	536		536				
89 Long Lab Greenhouses-Leased	25,866	25,866					
90 Long Lab Greenhouse	1,662	1,662					
91 Long Marine Lab Buildings (3)	10,846	10,846					
92 Long Marine Lab Trailers (11)	8,004	8,004					
93 Long Lab Residential Trailers (2)	R 891	891					

Table 1

Space Delegated to Officers
 For Fall 1994 (As of 3rd week of the quarter)
 In Assignable Square Feet (Asf)

Building Name	Building Total Asf	Campus Officers (See corresponding tables for details)					
		(1.1) Executive Vice Chanc	(1.2) Vice Chanc Student Affairs	(1.3) Vice Chanc Bus & Adm Services	(1.4) Asst Chanc Human Resources	(1.5) Asst Chanc University Advance	(1.6) Chancellor's Executive Assistant
94 Marina Trailers (2)	477		477				
95 McHenry Library	115,281	111,938		1,916	1,081		346
96 Media Services Trailer	453	453					
97 Merrill College Academic Building	10,789	10,593	196				
98 Merrill College Administration	2,097	1,904	193				
99 Merrill College Commons	949		949				
100 Merrill College Dining Commons	7,227	351	6,876				
101 Merrill College Faculty Annex	2,111	2,111					
102 Merrill College Faculty Commons	1,007	1,007					
103 Merrill College Library Study	3,085	3,085					
104 Merrill Ming Ong Computer Lounge	1,576	1,576					
105 Merrill College Provost Hse/Garage	3,705		3,705				
106 Merrill College Recreation Room	1,540		1,540				
107 Merrill College Residential Bld (5)	59,751	59,751					
108 Merrill Student Commons Bld (2)	1,838		1,838				
109 Merrill College Trailers (2)	2,172	2,172					
110 Miller Property Bath House	328			328			
111 Mt Hamilton Academic Bldgs (13)	47,588	47,588					
112 Mt Hamilton Dining Hall	3,406	3,406					
113 Mt Hamilton School	1,721	1,721					
114 Mt Hamilton Residential Bld (27)	53,634	53,634					
115 Multipurpose bld-Merrill Garden	366	366					
116 Multipurpose bld-Farm & Garden	366	366					
117 Natural Sciences Storage Bld	1,769	1,769					
118 Natural Sciences 2	50,565	50,565					
119 Natural Sciences Greenhouse	1,593	1,593					
120 Natural Sciences Paleo Lab	943	943					
121 Natural Sciences Woodshop	2,359	2,359					
122 Natural Sciences 2 Annex	6,727	6,727					
123 Natural Sciences 2 Trailers (4)	2,299	2,299					
124 Oakes College Academic Building	17,512	17,052		460			

Table 1

Space Delegated to Officers
 For Fall 1994 (As of 3rd week of the quarter)
 In Assignable Square Feet (Asf)

Building Name	Building Total Asf	Campus Officers (See corresponding tables for details)					
		(1.1) Executive Vice Chanc	(1.2) Vice Chanc Student Affairs	(1.3) Vice Chanc Bus & Adm Services	(1.4) Asst Chanc Human Resources	(1.5) Asst Chanc University Advance	(1.6) Chancellor's Executive Assistant
125 Oakes College Provost House	R 2,573						
126 Oakes College Residential Blds (16)	R 100,146		100,146				
127 Oakes Tutorial Building	7,615	4,561	3,054				
128 OMP Trailer	443			443			
129 OPERS Offices and Support	12,177		12,177				
130 OPERS Tennis Building	150		150				
131 Performing Arts Buildings (12)	43,100	42,680	420				
132 Physical Ed Activities Bld	3,076		3,076				
133 Porter College Academic Building	20,773	20,320	453				
134 Porter College Art Building	1,981	1,981					
135 Porter College Dining Hall	17,489	2,142	15,347				
136 Porter College Music Building	811	811					
137 Porter College Provost House	2,509		2,509				
138 Porter College Residential Blds (2)	R 79,457	1,623	77,834				
139 Powder House	120			120			
140 RV Recreation Bld	533		533				
141 Science Library	55,160	55,160					
142 Service Facility (Whole Earth Bld)	2,376		2,376				
143 Shop Barn	13,880			13,880			
144 Sinshemer Laboratories	62,098	62,098					
145 Social Sciences Trailers (2)	1,256	1,256					
146 Social Science I (College 9)	32,518	32,518					
147 Solar Greenhouse - Agroecology	389	389					
148 Stone House	879		879				
149 Stevenson College Academic Bld	16,591	14,793	1,798				
150 Stevenson College Commons	13,469	337	13,132				
151 Stevenson College Library Study	4,988	4,988					
152 Stevenson College Music Bld	592	592					
153 Stevenson College Provost House	R 3,134		3,134				
154 Stevenson College Residential Bld(9)	R 60,610		60,610				
155 Stevenson College Trailer	1,086	1,086					

Table 1

Space Delegated to Officers
 For Fall 1994 (As of 3rd week of the quarter)
 In Assignable Square Feet (Asf)

Building Name	Building Total Asf	Campus Officers (See corresponding tables for details)					
		(1.1) Executive Vice Chanc	(1.2) Vice Chanc Student Affairs	(1.3) Vice Chanc Bus & Adm Services	(1.4) Asst Chanc Human Resources	(1.5) Asst Chanc University Advance	(1.6) Chancellor's Executive Assistant
156 Storage Barn	12,195			12,195			
157 Student Center	9,479		9,479				
158 Student Center Multipurpose	2,062		2,062				
159 Student Music East	2,136		2,136				
160 Transportation Trailer	506			506			
161 Theater Barn	4,567	4,567					
162 Thimann Lab Trailers (2)	931	931					
163 Thimann Lecture Hall	4,325	4,325					
164 Thimann Receiving Bld	2,222	2,222					
165 Thimann Laboratories	56,010	56,010					
166 Upper Quarry Dressing Rooms	511	511					
167 UCO Lick Laboratory A	7,633	7,633					
168 UCO Lick Laboratory B	5,686	5,686					
169 UNEX Offices - Off Campus Lease	5,238	5,238					
170 University House	5,156	5,156					
171 University Relations Trailer	616					616	
Total General Campus Space	1,355,975	1,033,796	230,929	78,555	5,278	5,485	1,932
Total Residential Space	R 1,041,777	65,726	975,723	328			
Total Campus Space	2,397,752	1,099,522	1,206,652	78,883	5,278	5,485	1,932
Total Number of Buildings		Total Rms					
General Buildings	243						
Residential Buildings	Coded R 193						
	436	8,101					

Table 1.1

Space Delegated to Executive Vice Chancellor and Assigned to Units
 For Fall 1994 (As of 3rd week of the quarter)
 In Assignable Square Feet (ASF)

Assigned to Units (See corresponding tables for details)

Building Name	Delegated Officer - Executive Vice Chanc	(1.1.A) (1.1.B) (1.1.C) (1.1.D) (1.1.E) (1.1.F)						Registrar (General Classrms)	Univ Librarian	(1.1.G) (1.1.H)		CATS I&R Open Computer Labs
		Natural Sciences	Social Sciences	Humanities	Arts	Graduate	Univ Exten			EVC/Associate AVC College Provosts	EVC Chancellor/ Support	
1 Agroecology Trailers (11)	6,237		6,237									
2 Agroecology Building	1,251		1,251									
3 Ano Nuevo Trailer	299	299										
4 Applied Sciences Building	95,738	81,024	6,266				3,331	1,310				
5 Applied Sciences Trailers (17)	9,462	9,462				3,807						
6 Arboretum Buildings (4)	8,738	8,738										
7 Big Creek Reserve Buildings (3)	636	636										
8 Big Creek Reserve Residential Bldgs(3)	2,701	2,701										
9 Blacksmith Shop	1,157					1,157						
10 Classroom Building	8,723					772						
11 College Eight Academic Building	14,801		11,217	380			7,053	727			171	
12 College Eight Kitchen Bid	2,860		1,066				1,915					
13 Communications Building	9,255						1,329					
14 Cowell College Academic Bid	4,895			1,140			1,758	3,931				1,286
15 Cowell College Classroom Bid	901						901					
16 Cowell College Commons	9,275			6,090			640					
17 Cowell College Faculty Annex	1,787			1,787								
18 Cowell College Faculty Wing	2,510			2,270	240							
19 Cowell College Library Study	2,987		106	176								
20 Crown College Administration	1,764											
21 Crown College Classroom Building	3,863	248	248	276			2,673					
22 Crown College Faculty Wing	4,547	372	2,936	1,239								
23 Crown College Gatehouse	327											
24 Crown College Library Study	4,113											
25 Dolphinarium	477	477										956
26 Elena Baskin Buildngs (11)	21,048				21,048							
27 Earth and Marine Sciences Bld.	82,888	78,182					4,706					
28 Farm Buildings (8)	5,100		5,100									
29 Granite Canyon Trailers (2)	1,127	1,127										
30 Hahn Art Facility	2,820								2,820			
31 Hahn Student Services	2,495											
32 Humanities Trailer	241			241							2,495	
33 Kerr Hall	45,026	890	27,609				3,639				12,888	
34 Kresge College Academic Building	8,420		479	4,798	260		495					
35 Kresge College Assembly Building	4,634										2,388	
36 Kresge College Classroom Building	4,332			421							4,634	
37 Kresge College Faculty Addition A	1,536			1,289	247		3,885				26	
38 Kresge College Faculty Addition B	1,855			1,855								

Table 1.1

Space Delegated to Executive Vice Chancellor and Assigned to Units
 For Fall 1994 (As of 3rd week of the quarter)
 In Assignable Square Feet (ASF)

Assigned to Units (See corresponding tables for details)

Building Name	(1) Delegated Officer - Executive Vice Chanc	(1.1.A) (1.1.B) (1.1.C) (1.1.D) (1.1.E) (1.1.F)						Registrar (General Classrms)	Univ Librarian	(1.1.G) (1.1.H)		CATS I&R Open Computer Labs
		Natural Sciences	Social Sciences	Human- ities	Arts	Grad- uate	Univ Exten			EVC/Associate AVC College Provosts	EVC Chancellor/ EVC Support	
39 Kresge College Library Study	2,932			1,303					1,629			
40 Kresge College Lounge	132								132			
41 Kresge College Recreation Building	2,626			1,435			2,625	105,157	148	5,524	1,576	
42 Kresge/Porter Trailer	545							453	1,904			
43 Long Lab Greenhouses-Leased	25,866								351			
44 Long Lab Greenhouse	1,662								625			
45 Long Marine Lab Buildings (3)	10,846								3,085			
46 Long Marine Lab Trailers (11)	8,004											
47 Long Lab Residential Trailers (2)	891											
48 McHenry Library	112,284		450	1,094	59							
49 Media Services Trailer	453											
50 Merrill College Academic Building	10,593		3,281	4,539			2,625		148			
51 Merrill College Administration	1,904								1,904			
52 Merrill College Dining Commons	351								351			
53 Merrill College Faculty Annex	2,111		476	1,635					625			
54 Merrill College Faculty Commons	1,007			382					3,085			
55 Merrill College Library Study	3,085											
56 Merrill Ming Ong Computer Lounge	1,576											
57 Merrill College Trailers (2)	2,172		1,304	868								
58 Mt Hamilton Academic Bldgs (13)	47,588											
59 Mt. Hamilton Dining Hall	3,406											
60 Mt. Hamilton School	1,721											
61 Mt. Hamilton Residential Bldgs (27)	53,634	R										
62 Multipurpose bld-Merrill Garden	366		366									
63 Multipurpose bld-Farm & Garden	366		366									
64 Natural Sciences Storage Bid	1,769											
65 Natural Sciences 2	50,565											
66 Natural Sciences Greenhouse	1,593											
67 Natural Sciences Paleo Lab	943											
68 Natural Sciences Woodshop	2,359											
69 Natural Sciences 2 Annex	6,727											
70 Natural Sciences 2 Trailers (4)	2,299											
71 Oakes College Academic Building	17,052		119	10,304					2,265			
72 Oakes Tutorial Building	4,561								4,268			
73 Performing Arts Buildings (12)	42,680										490	
74 Porter College Academic Building	20,320		114	1,124								
75 Porter College Art Building	1,981						2,843		2,868			
76 Porter College Dining Hall	2,142								2,142			

Table 1.1

Space Delegated to Executive Vice Chancellor and Assigned to Units
 For Fall 1994 (As of 3rd week of the quarter)
 In Assignable Square Feet (ASF)

Building Name	Delegated Officer - Executive Vice Chanc	Assigned to Units (See corresponding tables for details)													
		Deans					Registrar (General Classrms)		EVC/Associate AVC		CATS I&R Open Computer Labs				
		(1.1.A) Natural Sciences	(1.1.B) Social Sciences	(1.1.C) Human-ities	(1.1.D) Arts	(1.1.E) Grad-uate	(1.1.F) Univ Exten	Univ Librarian	College Provosts	Chancellor/ EVC Support					
77 Porter College Music Building	811				811										
78 Porter College Residential Blds (2)	R 1,623												1,623		
79 Science Library	55,160												55,160		
80 Sinsheimer Laboratories	62,098	62,098													
81 Social Sciences Trailers (2)	1,256	1,256													
82 Social Science I (College 9)	32,518	26,907													
83 Solar Greenhouse - Agroecology	389	389													
84 Stevenson College Academic Bid	14,793	288			3,507										
85 Stevenson College Commons	337														
86 Stevenson College Library Study	4,988														
87 Stevenson College Music Bid	592														
88 Stevenson College Trailer	1,086														
89 Theater Barn	4,567														
90 Thimann Lab Trailers (2)	931	931													
91 Thimann Lecture Hall	4,325	725													
92 Thimann Receiving Bid	2,222	2,222													
93 Thimann Laboratories	56,010	54,764													
94 University House	R 5,156														
95 Upper Quarry Dressing Rooms	511														
96 UCO Lick Laboratory A	7,633	7,633													
97 UCO Lick Laboratory B	5,686	5,686													
98 UNEX Offices - Off Campus Lease	5,238														
Total General Campus Space	1,034,142	477,164	103,508	48,153	93,225	3,807	7,167	57,216	166,738	48,738	21,623	6,803			
Total Residential Space	65,726	58,947								1,623	5,156				
Total Campus Space	1,099,868	536,111	103,508	48,153	93,225	3,807	7,167	57,216	166,738	50,361	26,779	6,803			
Total Number of Buildings															
General Buildings															
Residential Buildings	33														

Table 1.1.A

Space Assigned to Dean of Natural Sciences and Distributed to Subunits
 For Fall 1994 (As of 3rd week of the quarter)
 In Assignable Square Feet (Asf)

Building Name	Assigned To Unit - Dean of Natural Sciences	Distributed to Subunits																					
		Nat Sci Div	Astronomy Board	Biology Board	Chemistry Board	Comp Enginr Board	Comp & Info Sci Board	Earth Sci Board	Gen Nat Sci Board	Mar Sci Board	Math Board	Physics Board	Inst of Mar Sci ORU	SC Inst of Particle Phy ORU	Lick Observ SC-MRU	Lick-Mt Hamilton MRU	Inst of Tect ORU	Non-linear Sci ORU	Nat Reser Syst	Arbor-Creek Reser	Big Creek Reser	Vivaria	
1 Ano Nuevo Trailer	299																						
2 Applied Sciences Building	81,024	5,329		448	11,337	25,315	13,863	616	6,698	240	11,126	946	2,109	2,950	26,692	50,994	3,523	648	616	8,738	636		
3 Applied Sciences Trailers (17)	9,462	4,185				616					900		3,145		0	55,355	0	0		0	2,701		
4 Arboretum Buildings (4)	8,738																						
5 Big Creek Reserve Bldgs (3)	636																						
6 Big Creek Reser Resid Bldgs (3)	2,701								248														
7 Crown College Classroom Bld	248								372														
8 Crown College Faculty Wing	372																						
9 Dophinarium	477												477										
10 Earth & Marine Sciences Bld	78,182	192		16,147				36,730	13,518		1,250	6,869								3,476			
11 Granite Canyon Trailers (2)	1,127											1,127											
12 Kerr Hall	890			890																			
13 Long Lab Greenhouses-leased	25,866											25,866											
14 Long Lab Greenhouse	1,662											1,662											
15 Long Marine Lab Buildings (3)	10,846											10,846											
16 Long Marine Lab Trailers (11)	8,004											8,004											
17 Long Lab Resid Trailers (2)	891											891											
18 Mt Hamilton Acad Bldgs (13)	47,588												47,588										
19 Mt Hamilton Dining Hall	3,406												3,406										
20 Mt Hamilton School	1,721												1,721										
21 Mt Hamilton Resid Bldgs (27)	53,634												53,634										
22 Natural Scis Storage Bld	1,769																						
23 Natural Scis 2	1,769																						
24 Natural Sci Greenhouse	50,565	289		1,593	6,154						18,353	8,868	7,114							648			
25 Natural Sci Paleo Lab	943							943															
26 Natural Sci Woodshop	2,359								2,359														
27 Natural Scis 2 Annex	4,462	1,384																					
28 Natural Scis 2 Trailers (4)	2,299	450																					
29 Sinsheimer Laboratories	62,098			48,386	13,712																		
30 Stevenson College Acad Bld	288						165																
31 Thimann Lab Trailers (2)	931	691																					
32 Thimann Lecture Hall	725											725											
33 Thimann Receiving Bld	2,222																						
34 Thimann Laboratories	54,764	530		949	828																		
35 UCO Lick Laboratory A	7,633			15,400	26,475						3,605												
36 UCO Lick Laboratory B	5,686																						
Total Natural Sci General Space	477,164	14,819	9,735	83,813	58,506	25,931	14,028	38,289	9,677	13,758	12,149	24,879	60,404	12,434	26,692	50,994	3,523	648	616	8,738	636		
Total Natural Sci Residential Space	58,947	0	0	0	0	0	0	0	0	0	0	0	891	0	0	0	0	0	0	0	0	0	
Total Natural Sciences Space	536,111	14,819	9,735	83,813	58,506	25,931	14,028	38,289	9,677	13,758	12,149	24,879	61,295	12,434	26,692	106,349	3,523	648	616	8,738	636	6,895	

Table 1.1.B

Space Assigned to Dean of Social Sciences and Distributed to Subunits
 For Fall 1994 (As of 3rd week of the quarter)
 In Assignable Square Feet

Building Name	Assigned to		Distributed to Subunits									
	Unit - Dean Social Sciences	Social Sciences Division	Anthro- polgy Board	Commun- ity Studies Board	Eco- nomics Board	Educa- tion Board	Environ Studies Board	General Soc Sci Board	Politics Board	Psychol- ogy Board	Sociol- ogy Board	Agro- ecology Prog
1 Agroecology Trailers (11)	6,237						1,251					6,237
2 Agroecology Building	1,251						6,266					
3 Applied Sciences Building	6,266						6,761					
4 College Eight Academic Building	11,217	634		3,291			132				399	
5 College Eight Kitchen Bid	1,066						1,066					
6 Cowell College Library Study	106							106				
7 Crown College Classroom Building	248					248						
8 Crown College Faculty Wing	2,936					2,613						
9 Farm Buildings (8)	5,100											5,100
10 Kerr Hall	27,609	981				512	660	1,023		24,433		
11 Kresge College Academic Building	479		116			59		363		236	96	
12 McHenry Library	450		59								228	
13 Merrill College Academic Building	3,281	507		228			1,243	1,075			119	
14 Merrill College Faculty Annex	476						119	238			763	
15 Merrill College Trailers (2)	1,304					541						366
16 Multipurpose Bid-Merrill Garden	366											366
17 Multipurpose Bid-Farm & Garden	366											
18 Oakes College Academic Building	119					119						
19 Porter College Academic Building	114					114						
20 Social Sciences Trailers (2)	1,256					1,256						
21 Social Science I (College 9)	26,907	5,352	14,386		7,169							389
22 Solar Greenhouse - Agroecology	389											
23 Stevenson College Academic Bid	3,832	481						780	252	2,319		
24 Stevenson College Library Study	1,047									1,047		
25 Stevenson College Trailer	1,086	323										763
Total General Social Sciences Space	103,508	8,601	14,561	3,519	7,169	5,462	14,938	3,583	2,562	24,921	4,971	13,221
Total Residential Social Sciences Space	0											
Total Campus Space	103,508	8,601	14,561	3,519	7,169	5,462	14,938	3,583	2,562	24,921	4,971	13,221

Table 1.1.D

Space Assigned to Dean of Arts and Distributed to Subunits
 For Fall 1994 (Ss of 3rd week of the quarter)
 Assignable Square Feet (Asf)

Building Name	Assigned To Unit - Dean of Arts	Distributed to Subunits									
		Arts Division	Art Board	Art History Board	Music Board	Theater Arts Board	General Arts	Drama Theater	Music Concert	Shakes-peare Santa Cruz	
1 Communications Building	4,038				1,199	2,839					
2 Cowell College Faculty Wing	240			120		120					
3 Elena Baskin Buildings (11)	21,048		21,048								
4 Hahn Art Facility	2,820		2,820			260					
5 Kresge College Academic Building	260			247							
6 Kresge College Faculty Addition A	247			59							
7 McHenry Library	59										
8 Performing Arts Buildings (12)	42,680		5,055		7,185	11,618		14,404	3,982	436	
9 Porter College Academic Building	13,371	2,583		1,682	2,780	3,317					
10 Porter College Art Building	1,981		1,981								
11 Porter College Music Building	811				811						
12 Stevenson College Music Bld	592				592						
13 Theater Barn	4,567							4,567			
14 Upper Quarry Dressing Rooms	511							511			
Total Arts General Space	93,225	2,583	30,904	2,108	12,567	18,154	3,009	19,482	3,982	436	
Total Arts Residential Space	0										
Total Arts Space	93,225	2,583	30,904	2,108	12,567	18,154	3,009	19,482	3,982	436	

Table 1.1.E

Appendix B

Space Assigned to Dean of Graduate Studies and Distributed to Subunits

For Fall 1994 (As of 3rd week of the quarter)
 In Assignable Square Feet (Asf)

Building Name	Assigned To Unit - Dean of Grad Studies	Distributed to Subunits		
		Division Admin	Contracts and Grants	Office of Research
1 Applied Sciences Building	3,807	1,940	686	1,181
Total Graduate Studies General Space	3,807	1,940	686	1,181
Total Graduate Studies Residential Space	0			
Total Graduate Studies Space	3,807	1,940	686	1,181

**Space Assigned to Dean of University Extension and
Summer Session and Distributed to Subunits
For Fall 1994 (As of 3rd week of the quarter)
In Assignable Square Feet (Asf)**

Building Name	Assigned To Unit - Dean of Univ Ex & Summer Ses	Distributed to Subunits	
		University Extension	Summer Session
1 Blacksmith Shop	1,157	1,157	
2 Classroom Building	772		772
3 UNEX Offices - Off Campus Lease	5,238	5,238	
Total Univ Exten & Summer Ses General Space		6,395	772
Total Univ Exten & Summer Ses Residential Space			0
Total Univ Exten & Summer Ses Space		6,395	772

Table 1.1.G

Space Assigned to EVC/Associate Vice Chancellor for Undergraduate Education and Distributed to Subunits
 For Fall 1994 (As of 3rd week of the quarter)
 In Assignable Square Feet (ASF)

Building Name	Assigned To Unit - EVC/Assoc Vice Chanc-- Undergrad Education	Distributed to Subunits							
		College Eight	Cowell College	Crown College	Kresge College	Merrill College	Oakes College	Porter College	Stevenson College
1 College Eight Academic Building	1,289	1,289							
2 College Eight Kitchen Bld	465	465							
3 Cowell College Academic Bld	1,997	1,997							
4 Cowell College Commons	2,545	2,545							
5 Cowell College Library Study	2,705	2,705							
6 Crown College Administration	1,764		1,764						
7 Crown College Classroom Building	418		418						
8 Crown College Gatehouse	327		327						
9 Crown College Library Study	3,157		3,157						
10 Kresge College Academic Building	2,388				2,388				
11 Kresge College Assembly Building	4,634				4,634				
12 Kresge College Classroom Building	26				26				
13 Kresge College Library Study	1,629				1,629				
14 Kresge College Lounge	132				132				
15 Kresge College Recreation Building	1,191				1,191				
16 Merrill College Academic Building	148					148			
17 Merrill College Administration	1,904					1,904			
18 Merrill College Dining Commons	351					351			
19 Merrill College Faculty Commons	625					625			
20 Merrill College Library Study	3,085					3,085			
21 Oakes College Academic Building	2,361						2,361		
22 Oakes Tutorial Building	4,071						4,071		
23 Porter College Academic Building	2,868							2,868	
24 Porter College Dining Hall	2,142							2,142	
25 Porter College Residential Bld (2)	1,623							1,623	
26 Stevenson College Academic Bld	2,238								2,238
27 Stevenson College Commons	337								337
28 Stevenson College Library Study	3,941								3,941
Total EVC/Assoc VC UG Ed General Space	48,738	1,754	7,247	5,666	10,000	6,113	6,432	5,010	6,516
Total EVC/Assoc VC UG Ed Residential Space	1,623							1,623	
Total EVC/Assoc VC UG Ed Space	50,361	1,754	7,247	5,666	10,000	6,113	6,432	6,633	6,516

Table 1.1.H

Space Assigned to Chancellor/EVC Support and Distributed to Subunits

For Fall 1994 (As of 3rd week of the quarter)
 In Assignable Square Feet (Asf)

Building Name	Assigned To Unit - EVC/ Chancellor/ EVC Support	Distributed to Subunits					Academic Vice Chancellor
		Audit	Acad Senate	Chancellor's General Admin	Staff Housing	Planning & Budget	
1 Classroom Building	171			171			
2 Hahn Student Services	2,495					2,495	
3 Kerr Hall	12,888	950				11,938	
4 Kresge/Porter Trailer	545			545			
5 McHenry Library	5,524		642	3,230			
6 University House	5,156				5,156		1,652
Total EVC/Chanc's Support General Space		950	642	3,946		14,433	1,652
Total EVC/Chanc's Support Residential Space R					5,156		
Total EVC/Chanc's Support Space		950	642	3,946	5,156	14,433	1,652

Table 1.2

Space Delegated to Vice Chancellor--Student Affairs and Assigned to Units
 For Fall 1994 (As of 3rd week of the quarter)
 In Assignable Square Feet (Asf)

Building Name	Delegated Officer - Vice Chanc Student Affairs	Assigned to Units																						
		Vice Chan Support/ Misc.*	Accounts Receivable	Adminis- tions	Arts & Lec- tures	Book- store/ Photo	Career Serv	Child Care	Colleges- CAO's	Coun- selling	Dis- abled Serv	Finan- cial Aid	Hous- ing Serv	Inter- nat'l Prog	OPERS	Re-En- try Serv	Regis- trar	SAA/ EOP	SOAR	Student Employ	Student Health	Women's Center		
1 Bookstore Buildings (2)	7,272					7,272																		
2 Cardiff House	1,778																							1,778
3 Classroom Building	1,280																							
4 College Eight Academic Building	162									162														
5 College Eight Cafe	2,814																							
6 College Eight Dining Hall Bid	4,566																							
7 College Eight Kitchen Bid	7,909																							
8 College Eight Student Commons	2,176																							
9 College Eight Resid Bldgs (14)	126,692																							
10 Communications Building	1,544					1,544																		
11 Cookhouse	2,419																							
12 Cowell College Academic Bid	149																							
13 Cowell College Commons	17,921																							
14 Cowell College Faculty W/ing	1,20																							
15 Cowell College Prov Hsg/Garage	3,770																							
16 Cowell Residential Buildings (8)	61,851																							
17 Cowell Student Health Center	13,664																							
18 Crown College Administration	169																							
19 Crown College Classroom Bldg	124																							
20 Crown College Commons	12,291																							
21 Crown College Multipurpose Rm	2,873																							
22 Crown College Provost House	3,450																							
23 Crown College Resid Bldgs (23)	144,565																							
24 East Pool Facility	450																							
25 Faculty Housing-Hager-Blds (8)	47,398																							
26 Field House East	21,888																							
27 Field House West	10,009																							
28 Family Stndt Child Care Fac/Adm	2,489																							
29 Family Stndt Child Care Trailer	660																							
30 Family Stndt Child Care Storage	55																							
31 Family Stndt Resid Blds (43)	164,032																							
32 Graduate Housing Buildings (4)	23,403																							
33 Granary	2,097																							
34 Hager Court Office	1,627																							
35 Hahn Student Services	20,719																							
36 Housing Storage Buildings (2)	158																							
37 Housing Administration Bld	4,722																							
38 Kresge College Academic Bldg	708																							
39 Kresge College Assembly Bldg	2,893																							
40 Kresge College Lounge	1,185																							
41 Kresge College Mini Gym	1,617																							
42 Kresge College Provost House	3,187																							
43 Kresge College Recreation Bldg	284																							
44 Kresge College Resid Blds (16)	87,113																							
45 KZSC Storage/Transmitter (2)	536																							
46 Marina Trailers (2)	477																							
47 Merrill College Academic Bldg	196																							
48 Merrill College Administration	193																							
49 Merrill College Commons	949																							
50 Merrill College Dining Commons	6,876																							
51 Merrill College Prov Hse/Garage	3,705																							

Miscellaneous includes City on a Hill Press, Commercial Enterprises, KZSC, and Student Music East.

Table 1.2

Space Delegated to Vice Chancellor--Student Affairs and Assigned to Units
 For Fall 1994 (As of 3rd week of the quarter)
 In Assignable Square Feet (Asf)

Building Name	Delegated Officer - Vice Chan- ce Vice Student Affairs	Assigned to Units																					
		Vice Chan Support/ Misc.*	Accounts Receivable	Adminis- trations	Arts & Lec- tures	Book- store/ Photo	Career Serv	Child Care	Colleges- CAO's	Coun- selling	Dis- abled Serv	Finan- cial Aid	Hous- ing Serv	Inter- nat'l Prog	OPERS	Re-En- try Serv	Regis- trar	SAA/ EOP	SOAR	Student Employ	Student Health	Women's Center	
52 Merrill College Recreation Rm	R	1,540						1,540															
53 Merrill College Resid Bldg (5)	R	59,751						59,751															
54 Merrill Stnt Commons Bldg (2)	R	1,838						1,838															
55 Oakes College Academic Bldg	R	460						302	158														
56 Oakes College Provost House	R	2,573						2,573															
57 Oakes College Resid Bldg (16)	R	100,146						100,146															
58 Oakes Tutorial Building	R	3,054						1,124															
59 OPERS Offices and Support		12,177																					
60 OPERS Tennis Building		150																					
61 Performing Arts Buildings (12)		420																					
62 Physical Ed Activities Bld		3,076																					
63 Porter College Academic Building		453						225	228														
64 Porter College Dining Hall		15,347						5,151															
65 Porter College Provost House	R	2,509						2,509															
66 Porter College Resid Bldg (2)	R	77,834						77,834															
67 RV Recreation Bld		533																					
68 Service Facil (Whole Earth Bld)		2,376																					
69 Stone House		879																					
70 Stevenson College Academic Bld		1,798						1,678	120														
71 Stevenson College Commons		13,132						5,772															
72 Stevenson College Provost House R	R	3,134						3,134															
73 Stevenson College Resid Bldg(9)	R	60,610						60,610															
74 Student Center		9,479																					
75 Student Center Multipurpose		2,062																					
76 Student Music East		2,136																					
Total General VC Student Affairs Space		230,929						43,047	2,112	596	3,197	67,890	741	48,227	539	3,417	2,367	11,541		1,159	12,780	1,778	
Total Resid VC Student Affairs Space R	R	975,723						740,890				187,435	47,398										
Total VC Student Affairs Space		1,206,652						783,937	2,112	596	3,197	255,325	48,139	48,227	539	3,417	2,367	11,541		1,159	12,780	1,778	

*Miscellaneous includes City on a Hill Press, Commercial Enterprises, KZSC, and Student Music East.

Table 1.3

Space Delegated to Vice Chancellor--Business and Administrative Services and Assigned to Units
 For Fall 1994 (As of 3rd week of the quarter)
 In Assignable Square Feet (Asf)

Building Name	Delegated Officer - Vice Chanc Bus & Adm Services	Assigned to Units														
		Campus Facilities	Duplicating	Accounting	Mail Services	Computer Center	CATS	EH&S	Fire Dept	Garage	Security	AIS	Other	Purchasing	Receiving	TAPS
1 Architect & Engineer Trailer	426	426														
2 Applied Sciences Building	11,927	1,108	4,565	3,422	2,832											
3 Campus Facilities Trailers (2)	844	844														
4 Cardiff House Annex	369	369														
5 Communications Building	9,952		961													
6 Central Heating Plant	8,657	8,657														
7 Elena Baskin Buildings (11)	298	298														
8 Environmental Assessment Trailer	524	524														
9 Env. Health & Safety Facility	2,858	1,903						955								
10 Env. Health & Safety Trailers (2)	1,633							1,633								
11 Fire House	3,457							3,457								
12 Garage	2,759								2,759							
13 Hay Barn	4,940	4,940														
14 Kiosk Buildings (2)	42									42						
15 Kresge College Storage Bid	159	159														
16 Kresge/Porter Trailer	650		650													
17 McHenry Library	1,916										1,916					
18 Miller Property Bath House	328											328				
19 OMP Trailer	443	443														
20 Powder House	120											120				
21 Shop Barn	13,880												1,531			
22 Storage Barn	12,195	12,349								2,022						
23 Transportation Trailer	506															506
Total BAS General Space	78,555	32,020	6,176	3,422	2,832	8,364	627	2,588	3,457	2,759	2,064	1,916	120	1,531	9,878	801
Total BAS Residential Space	R 328	0	0	0	0	0	0	0	0	0	0	0	328	0	0	0
Total BAS Space	78,883	32,020	6,176	3,422	2,832	8,364	627	2,588	3,457	2,759	2,064	1,916	448	1,531	9,878	801

Table 1.4

Space Delegated to Assistant Chancellor--Human Resources and Assigned to Units

For Fall 1994 (As of 3rd week of the quarter)
In Assignable Square Feet (Asf)

Building Name	Delegated Officer - Asst Chanc Human Resources	Assigned to Units				
		Staff Personnel	Affirmative Action	Labor Relations	Title IX	Academic Personnel
1 Affirmative Action Trailer	398	398	697	416	100	1,081
2 Communications Building	3,799	2,586	697	416	100	1,081
3 McHenry Library	1,081					
Total Human Resources General Space	5,278	2,984	697	416	100	1,081
Total Human Resources Residential Space	0	0				
Total Human Resources Space	5,278	2,984	697	416	100	1,081

Table 1.5

Appendix B

Space Delegated to Assistant Chancellor--University Advancement and Assigned to Units

For Fall 1994 (As of 3rd week of the quarter)
In Assignable Square Feet (Asf)

Building Name	Delegated Officer - Asst Chanc University Advancement	Assigned to Units	
		Alumni Services	Development
1 Carriage House	4,448	843	3,605
2 Development Trailer	421		421
3 University Relations Trailer	616		616
Total University Advancement General Space	5,485	843	4,642
Total University Advancement Residential Space	0		
Total University Advancement Space	5,485	843	4,642

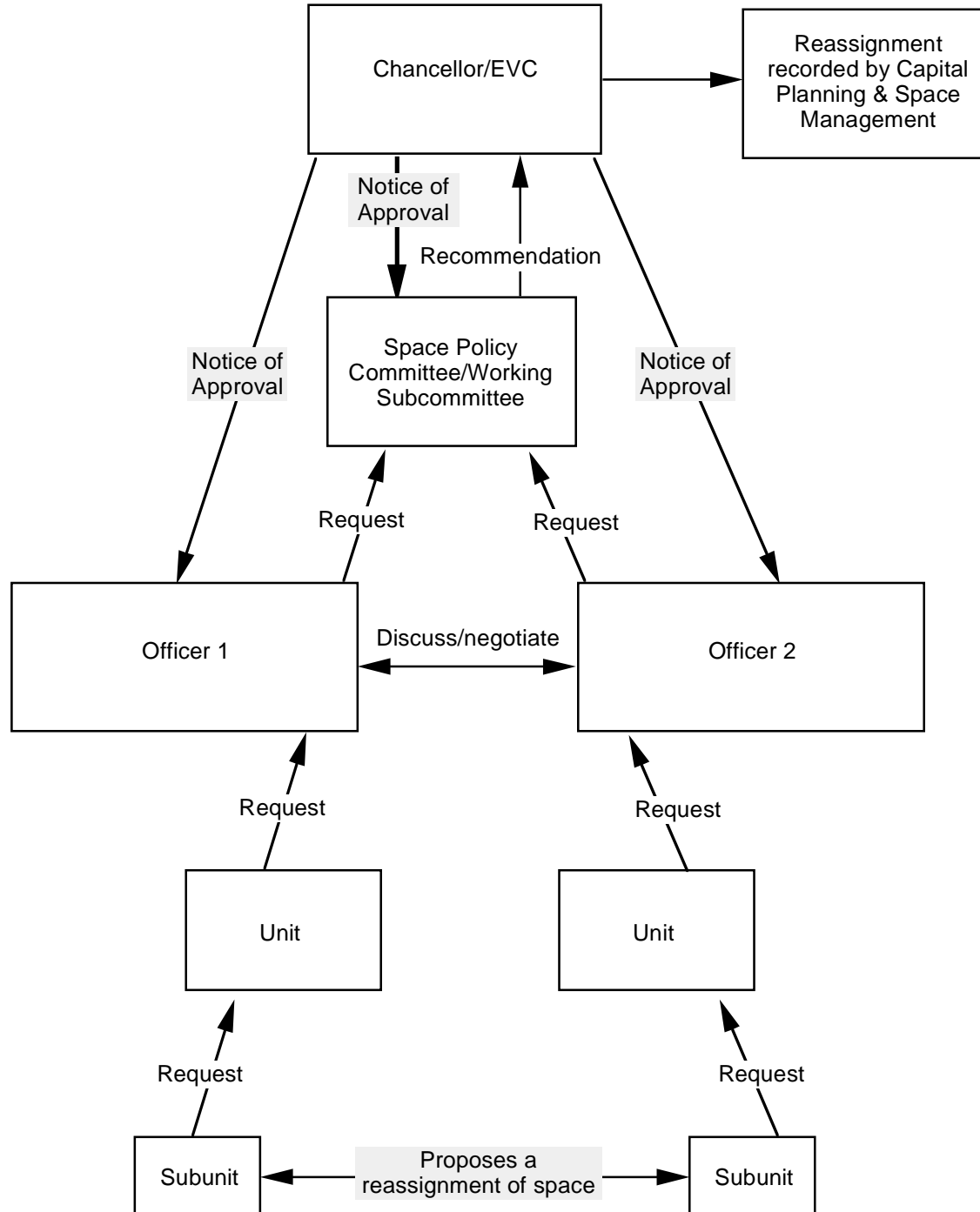
Table 1.6

Space Delegated to Chancellor's Executive Assistant and Assigned to Unit

For Fall 1994 (As of 3rd week of the quarter)

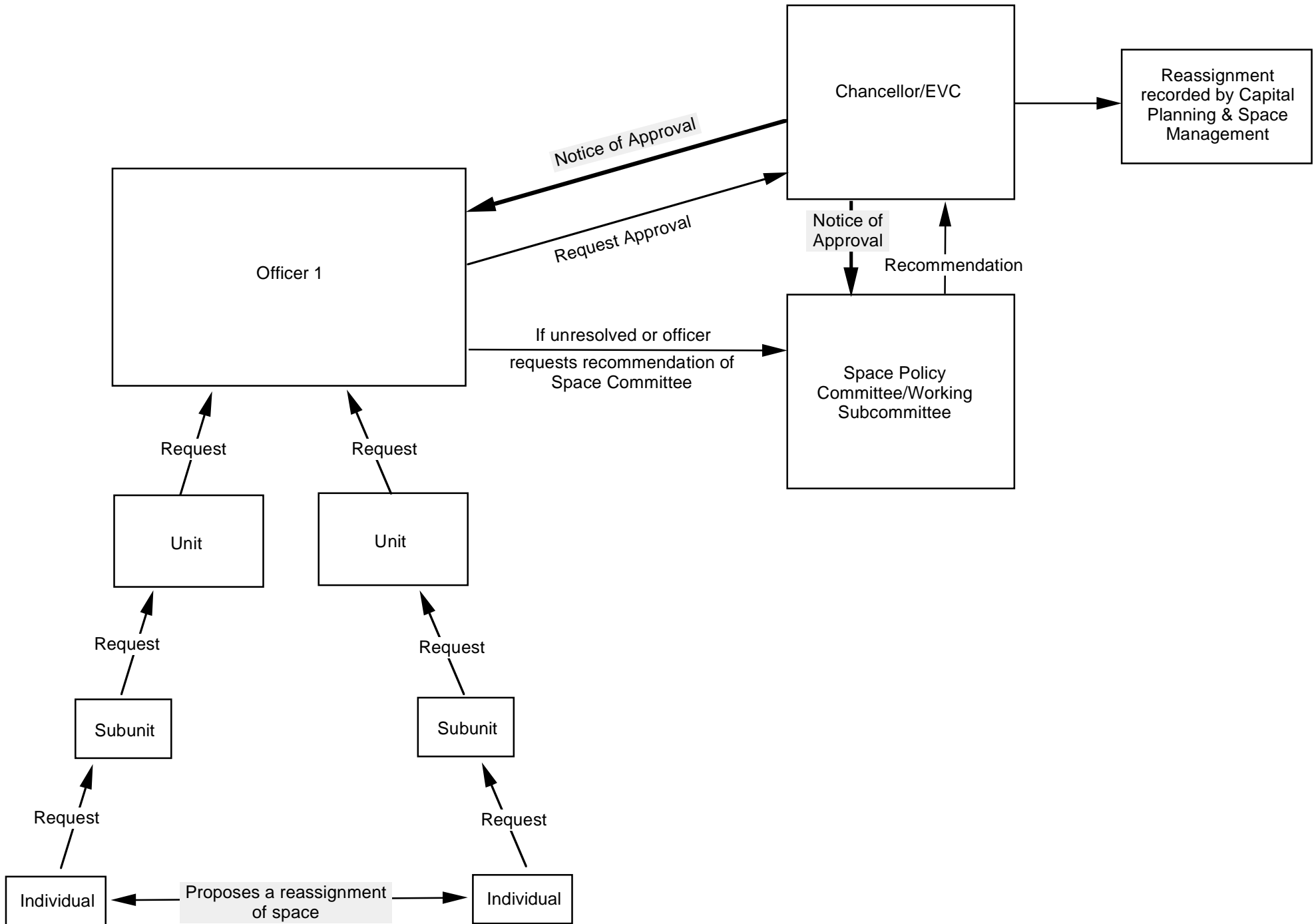
In Assignable Square Feet (Asf)

Building Name	Delegated Officer - Chancellor's Executive Assistant	Assigned to Units	
		Public Affairs	Ombuds- man
1 Carriage House	1,586	1,586	
2 McHenry Library	346		346
Total Chancellor's Executive Assistant General Space	1,932	1,586	346
Total Chancellor's Executive Assistant Residential Space	0		
Total Chancellor's Executive Assistant Space	1,932	1,586	346



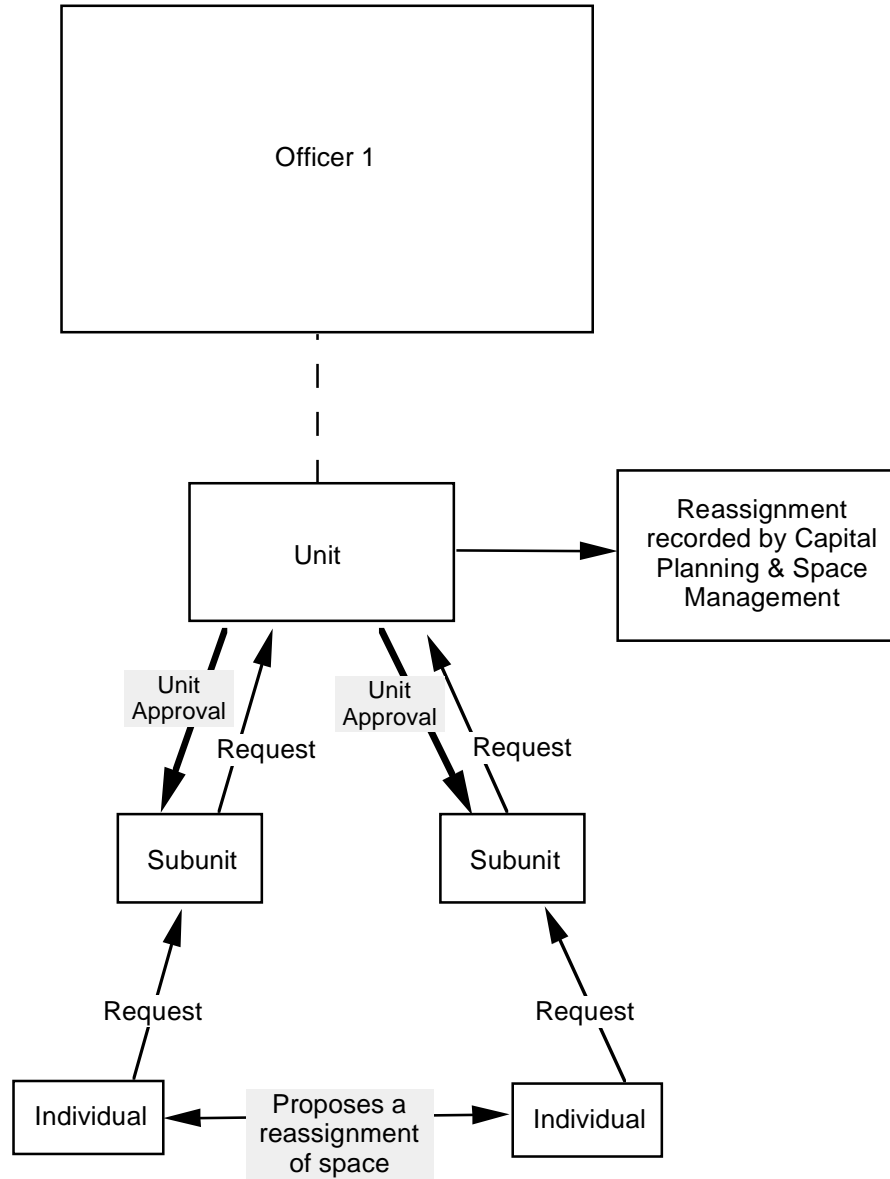
Example 2

Reassignment of Space from One Unit to Another Unit
(Reporting to the same officer)

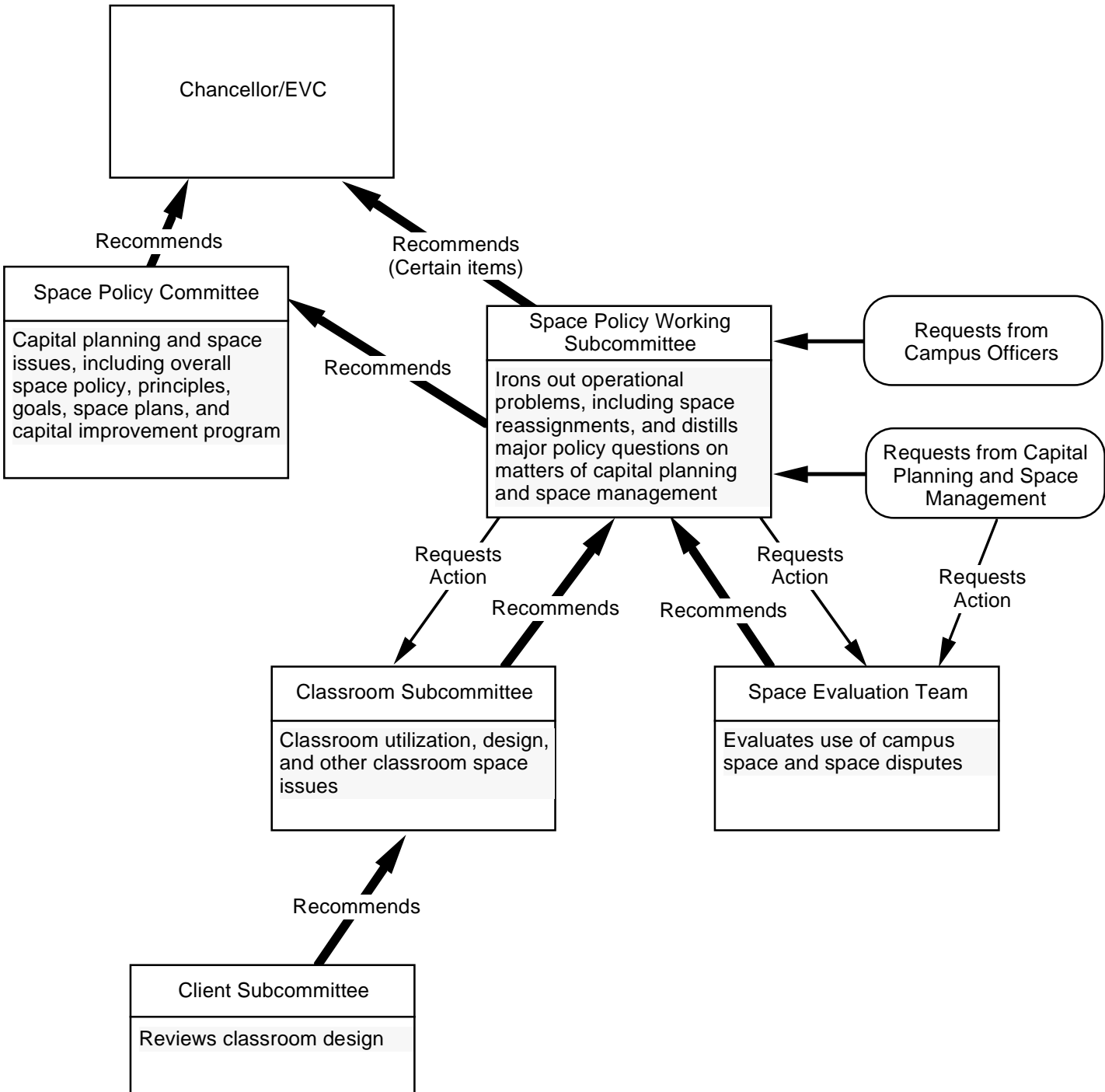


Example 3

Reassignment of Space within One Unit



Organization of Space Committees



Space Reassignment Flow Chart

